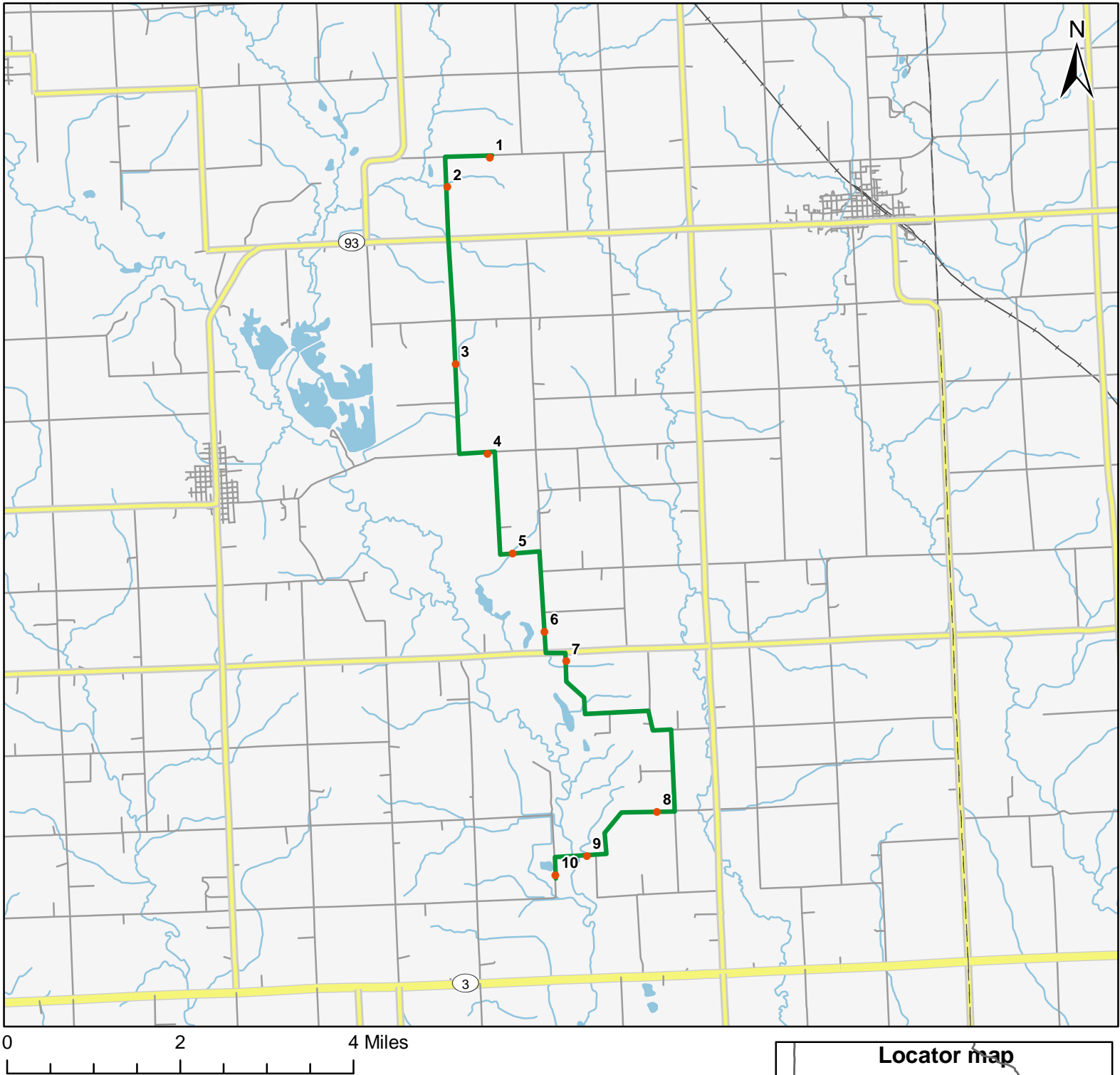


North American Amphibian Monitoring Program



Route: 360111 Spring Fountain, IA



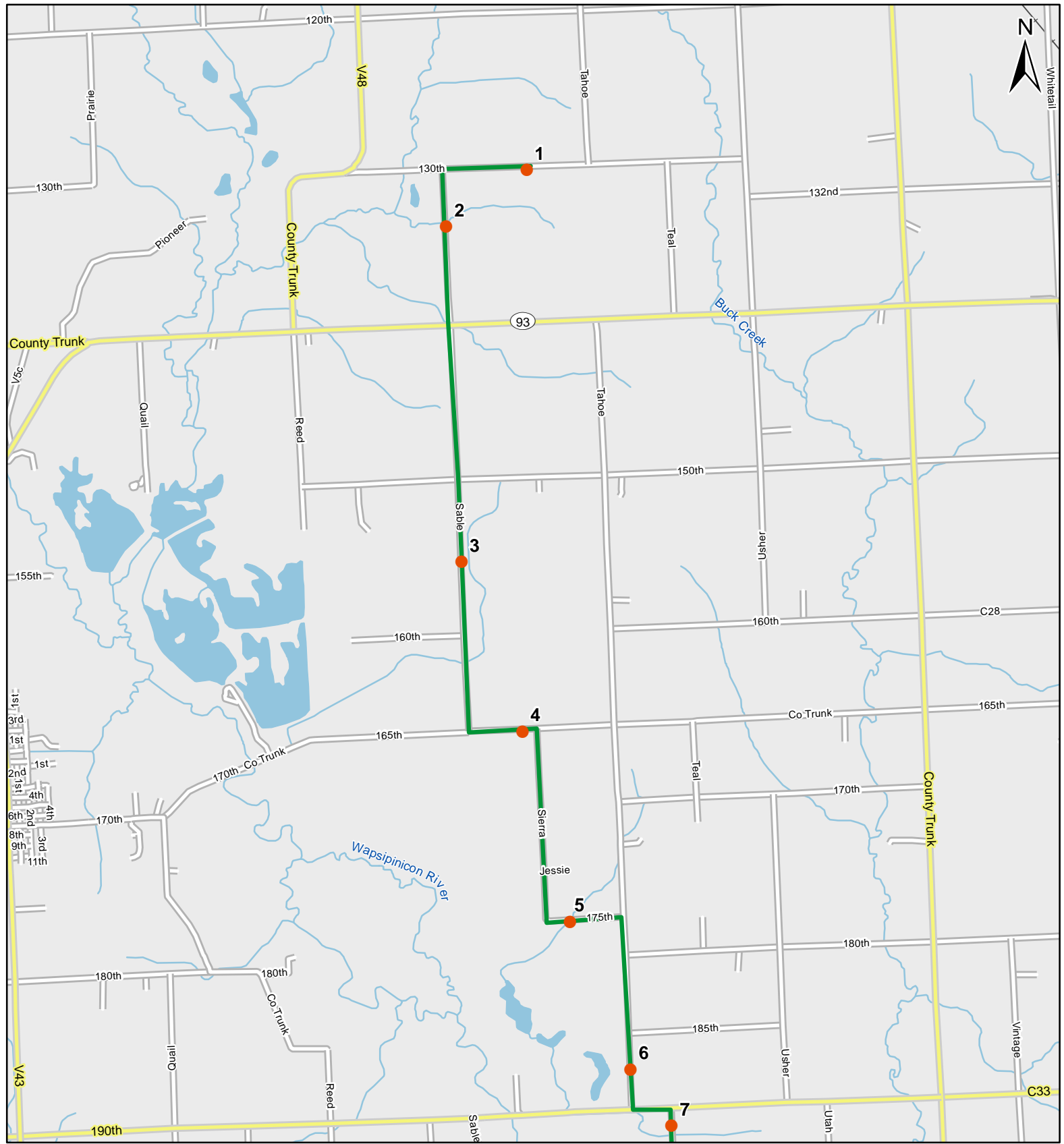
Legend

- Stop Locations
- Route Path



For more information, please visit the NAAMP website:
<http://www.pwrc.usgs.gov/naamp/>

Route: 360111 Spring Fountain, IA



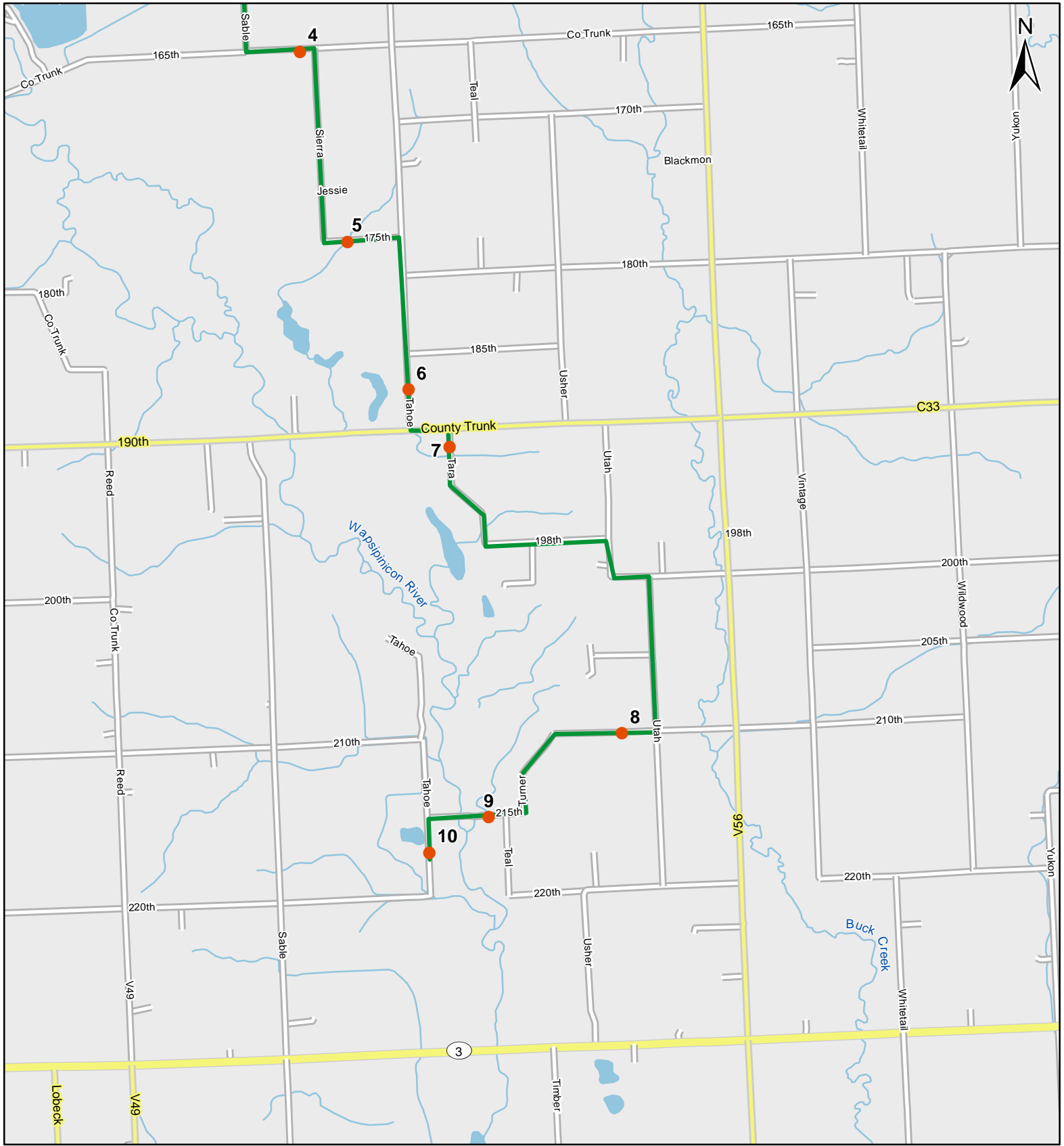
0 1 Miles

1:50,000

Legend

- Stop Locations
- Route Path

Route: 360111 Spring Fountain, IA



0 1 Miles

1:50,000

Legend

- Stop Locations
- Route Path



Frog and Toad Call Survey Route Description

Route ID **360111**

Established:

Site Number	Name	County	Latitude	Longitude	Directions
1	0	Bremer	42.8619995	-92.1885986	Start at 0.4 miles west of Tahoe Ave. on 110th. Creek buffer, next to cedar tree
2	0.8	Bremer	42.8569984	-92.1992035	Left on Sable Ave. Wooded creek at culvert
3	3	Bremer	42.8255005	-92.1990967	Damp Ditch at wooded fence line
4	4.5	Bremer	42.8092995	-92.1922989	Left on 165th. Damp ditch after farm
5	6	Bremer	42.7913017	-92.1873016	Right on Sierra. ditch creek buffer after curve.
6	7.3	Bremer	42.7771988	-92.180397	Right on Tahoe. At culvert after 185th St.
7	7.9	Bremer	42.7717018	-92.175499	Left on CR C33/190th, right on Tara Ave. At post overlooking pond on the right.
8	11.2	Bremer	42.7442017	-92.1551971	Left on 198th, right on Utah Ave., Right on 210th. Damp ditch at house #3006.
9	12.5	Bremer	42.7369003	-92.1725998	Flood plain at Smoketown Access
10	13.1	Bremer	42.733799	-92.1802979	Left on Tahoe Ave. Ditch creek at edge of pond across from house #2171.